






# CHEMICAL INJECTION PUMP DHDA 66 (BRAND NEW)



+966 896 2325   
info@advanced-lines.com   
www.advanced-lines.com 

# HPU-DHDA SERIES

Model – HPU-DHDA66/4.1

Air operated, high-flow, double-acting hydraulic pumps for pressure testing, chemical injection, and hydraulic power.

## Features:

- Infinitely variable output pressure and flow
- Holds static pressure without generating heat or consuming power.
- Standard models are suitable for oil or water applications
- Well proven and trouble free operation
- Designed for ease of maintenance
- Low cost servicing
- Robust construction

| PERFORMANCE DATA          |   |
|---------------------------|---|
| Max Rated Output Pressure | 13,300psi (917bar)                      |
| Output Per Cycle          | 8.0 in <sup>3</sup> (131cc)             |
| Max Flow                  | 992 in <sup>3</sup> /min (16 litre/min) |
| Max Air Supply Pressure   | 100psi (7bar)                           |
| Ratio                     | 132: 1                                  |
| Air Consumption           | 200 scfm (5,664 l/min)                  |

| CONSTRUCTION       |   |
|--------------------|---|
| Frame and Tank     | Stainless Steel   |
| Air Motor          | Anodised Aluminium / Nitrile (Buna-N) Seals                         |
| Hydraulic Cylinder | Aluminium Bronze  |
| Piston             | Stainless Steel + Corrosion Resistant Chrome Finish                 |
| Outlet Port        | Stainless Steel   |
| L1** (Standard)    | Brass / Copper Hydraulic Inlet, Air Inlet and Plated Steel Silencer |
| L2** (Optional)    | Stainless Steel Hydraulic Inlet, Air Inlet and Silencer             |

| SEAL OPTIONS (N*) |   |
|-------------------|---|
| N* (Standard)     | PTFE Main Seal & Nitrile (Buna-N) Check Valve Seals |
| V                 | PTFE Main Seal & Viton (FKM) Check Valve Seals      |
| C                 | PTFE Main Seal & Chemraz (FFKM) Check Valve Seals   |

| CONNECTIONS      |               |
|------------------|---------------|
| Hydraulic Inlet  | 1/2"NPT(F)    |
| Hydraulic Outlet | 9/16"MP(F)    |
| Air Inlet        | 3/4"BSPP(F)   |
| Net Weight       | 112kg (248lb) |

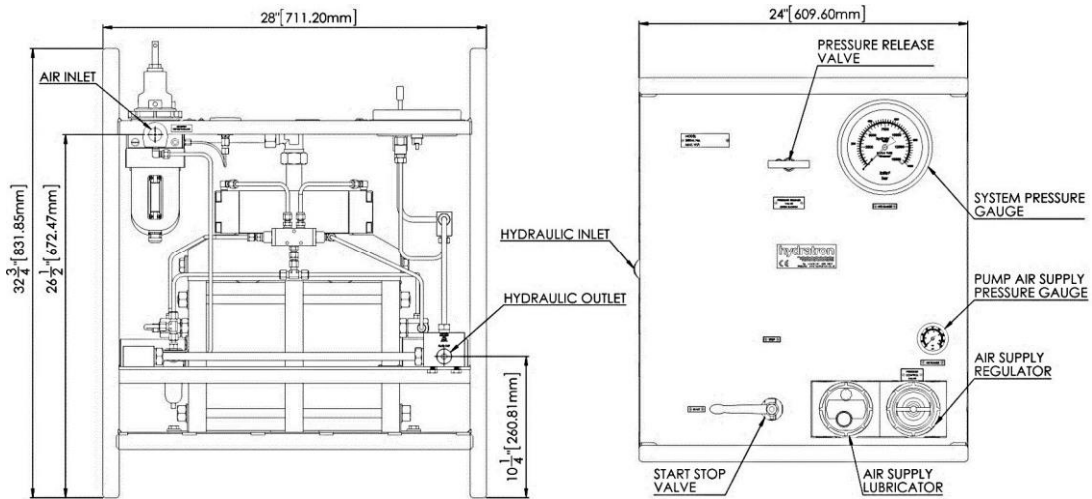
| Common options (but not limited to) |  |                                |  |
|-------------------------------------|--|--------------------------------|--|
| /A                                  | ATEX (94/9/EC) II 2GD c T5   | /W                             | Fitted with wheels   |
| /F                                  | Panel mount digital stroke counter (non ATEX)  | /O (Over all dimension varies) | Single pen chart recorder complete with recorder isolation valve |
| /G                                  | Panel mount pneumatic stroke counter   | /I (Over all dimension varies) | Isolation Valve  |
| /R                                  | Relief valve   | /X                             | Gauge protection guard   |
| /M                                  | Mild steel painted frame (Painted Blue) + Stainless steel tank (if applicable to the unit) |                                |  |



+966 896 2325  
 info@advanced-lines.com  
 www.advanced-lines.com



## GENERAL LAYOUT DRAWING – Model HPU-DHDA66/4.1

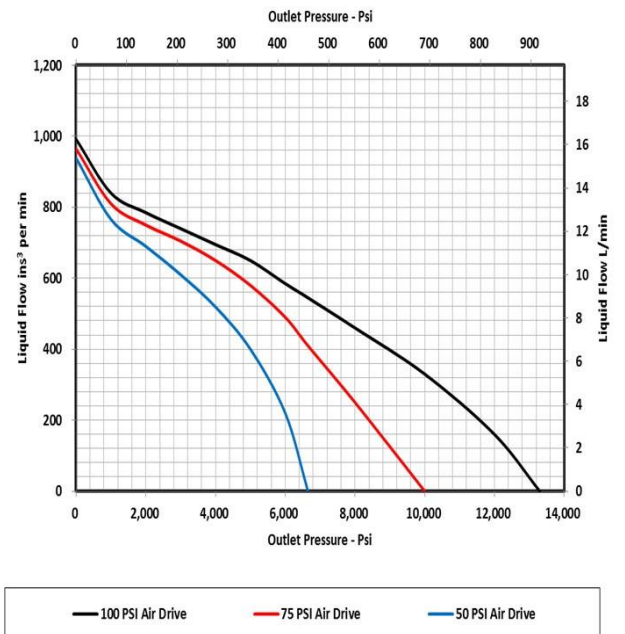


### HYDRAULIC PRESSURE STATIC/STALL CONDITIONS

| Air Pressure   | Hydraulic Pressure |
|----------------|--------------------|
| 20psi (1.4bar) | 2,660psi (183bar)  |
| 40psi (2.8bar) | 5,320psi (367bar)  |
| 60psi (4bar)   | 7,980psi (550bar)  |
| 80psi (5.5bar) | 10,640psi (734bar) |
| 100psi (7bar)  | 13,300psi (917bar) |

### FLOW CURVE

DHDA66 Ratio 132:1





|                 |                         |                              |  |
|-----------------|-------------------------|------------------------------|--|
| SIRA 06ATEX6143 |                         | CSAE 21UKEX6639              |  |
| CE UK CA        | Ex II 2G Ex h IIB T4 Gb | Ex II 2D Ex h IIIB T104°C Db |  |
|                 |                         |                              |  |
| MODEL           | HPU-DHA66/3.3-N-L2/AGS  |                              |  |
| MAX W.P         | 13,300 PSI              |                              |  |
| SERIAL No       | 22-038279-003           |                              |  |
| YEAR OF MANF    | 2023                    |                              |  |



+966 896 2325  
 info@advanced-lines.com  
 www.advanced-lines.com

