

CHEMICAL INJECTION PUMP DHDA 66 (BRAND NEW)



+966 896 2325
info@advanced-lines.com
www.advanced-lines.com



HPU-DHDA SERIES

Model – HPU-DHDA66/4.1

Air operated, high-flow, double-acting hydraulic pumps for pressure testing, chemical injection, and hydraulic power.

Features:

- Infinitely variable output pressure and flow
- Holds static pressure without generating heat or consuming power.
- Standard models are suitable for oil or water applications
- Well proven and trouble free operation
- Designed for ease of maintenance
- Low cost servicing
- Robust construction

PERFORMANCE DATA	
Max Rated Output Pressure	13,300psi (917bar)
Output Per Cycle	8.0 in ³ (131cc)
Max Flow	992 in ³ /min (16 litre/min)
Max Air Supply Pressure	100psi (7bar)
Ratio	132: 1
Air Consumption	200 scfm (5,664 Nl/min)

CONSTRUCTION	
Frame and Tank	Stainless Steel
Air Motor	Anodised Aluminium / Nitrile (Buna-N) Seals
Hydraulic Cylinder	Aluminium Bronze
Piston	Stainless Steel + Corrosion Resistant Chrome Finish
Outlet Port	Stainless Steel
L1** (Standard)	Brass / Copper Hydraulic Inlet, Air Inlet and Plated Steel Silencer
L2** (Optional)	Stainless Steel Hydraulic Inlet, Air Inlet and Silencer

SEAL OPTIONS (N*)	
N* (Standard)	PTFE Main Seal & Nitrile (Buna-N) Check Valve Seals
V	PTFE Main Seal & Viton (FKM) Check Valve Seals
C	PTFE Main Seal & Chemraz (FFKM) Check Valve Seals

CONNECTIONS	
Hydraulic Inlet	1/2"NPT(F)
Hydraulic Outlet	9/16"MP(F)
Air Inlet	3/4"BSPP(F)
Net Weight	112kg (248lb)

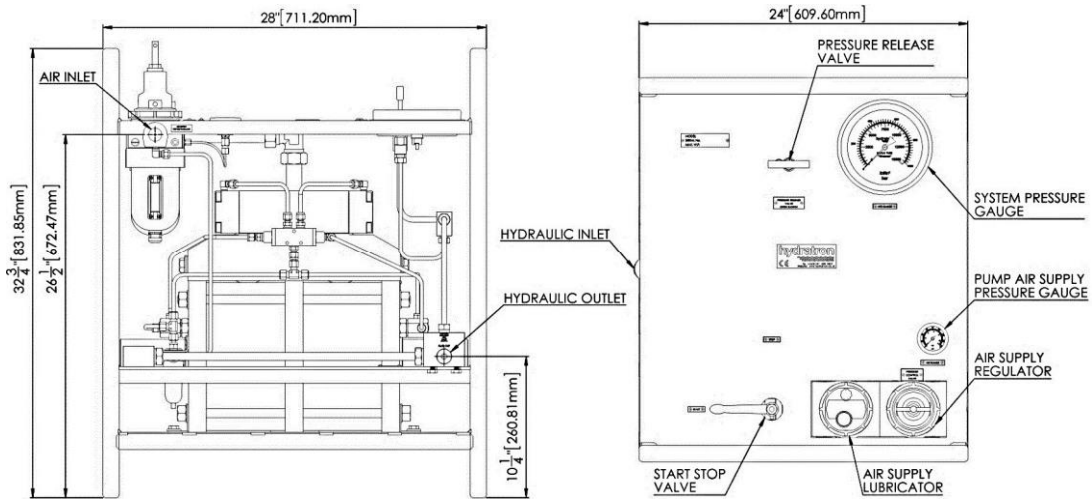
Common options (but not limited to)			
/A	ATEX (94/9/EC) II 2GD c T5	/W	Fitted with wheels
/F	Panel mount digital stroke counter (non ATEX)	/O (Over all dimension varies)	Single pen chart recorder complete with recorder isolation valve
/G	Panel mount pneumatic stroke counter	/I (Over all dimension varies)	Isolation Valve
/R	Relief valve	/X	Gauge protection guard
/M	Mild steel painted frame (Painted Blue) + Stainless steel tank (if applicable to the unit)		



+966 896 2325
 info@advanced-lines.com
 www.advanced-lines.com



GENERAL LAYOUT DRAWING – Model HPU-DHDA66/4.1

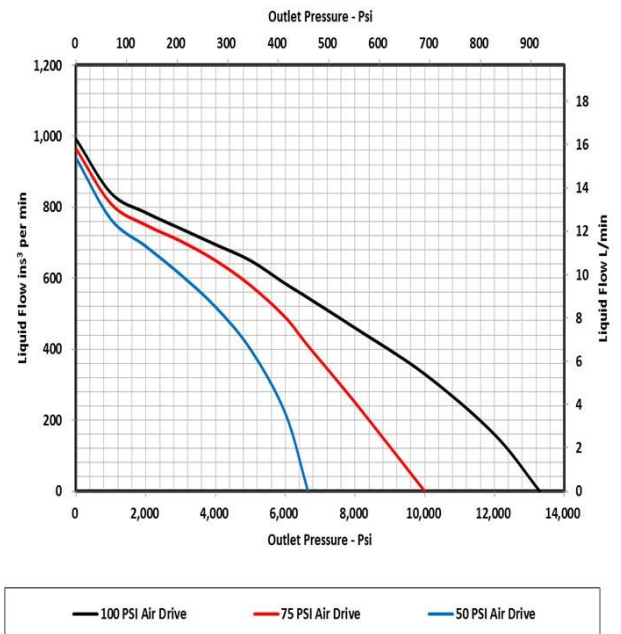


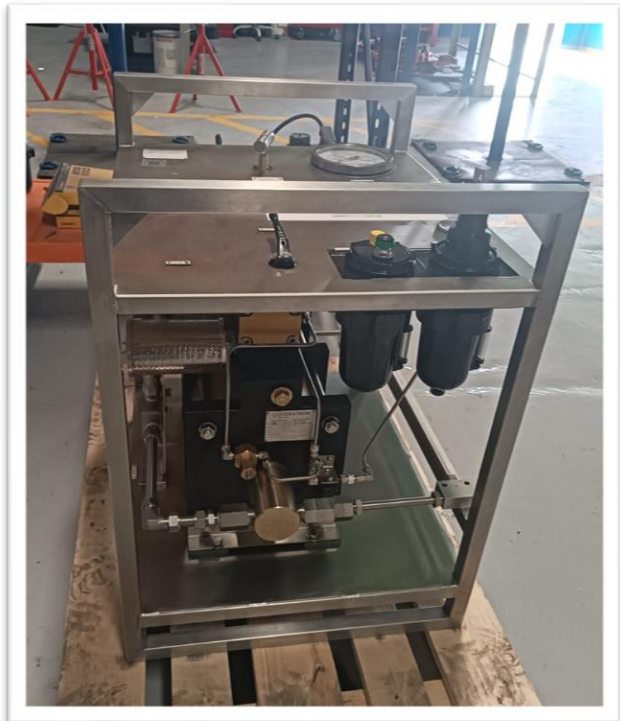
HYDRAULIC PRESSURE STATIC/STALL CONDITIONS

Air Pressure	Hydraulic Pressure
20psi (1.4bar)	2,660psi (183bar)
40psi (2.8bar)	5,320psi (367bar)
60psi (4bar)	7,980psi (550bar)
80psi (5.5bar)	10,640psi (734bar)
100psi (7bar)	13,300psi (917bar)

FLOW CURVE

DHDA66 Ratio 132:1





SIRA 06ATEX6143		CSAE 21UKEX6639	
CE UK CA	II 2G Ex h IIB T4 Gb		
	II 2D Ex h IIIB T104°C Db		
MODEL	HPU-DHDA66/3.3-N-L2/AGS		
MAX W.P	13,300 PSI		
SERIAL No	22-038279-003		
YEAR OF MANF	2023		

+966 896 2325

info@advanced-lines.com

www.advanced-lines.com

